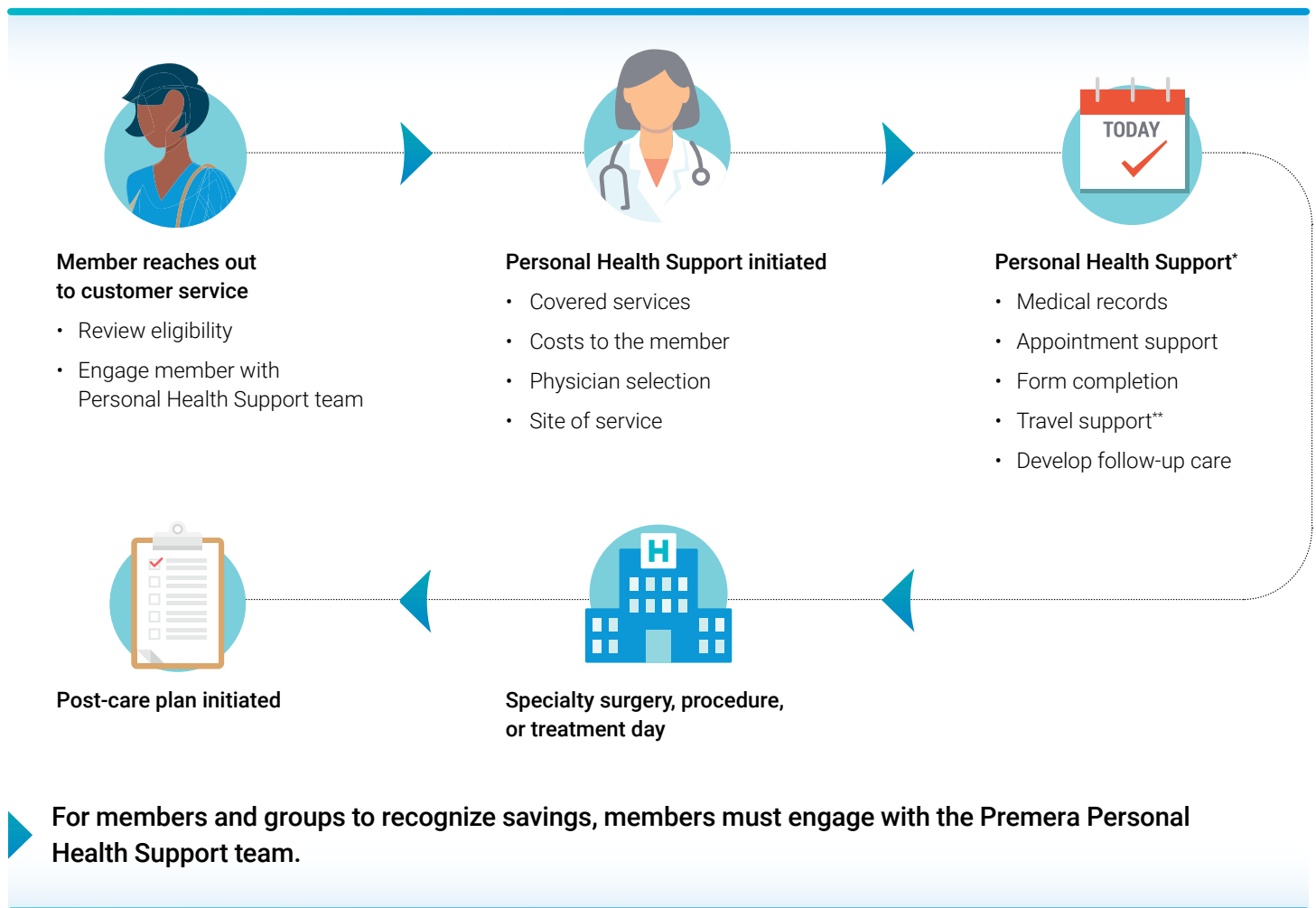


Premera Designated Centers of Excellence

FOR SELF-FUNDED LARGE GROUPS

Access trusted and cost-effective care for when life happens

Premera Designated Centers of Excellence (PDCOE) expands member access to high-performing facilities, provides personalized health support, and serves as an opportunity for employers to save on specialty surgeries, procedures, or treatments without sacrificing quality. With PDCOE, groups can recognize an average of 21% cost savings per procedure.¹



¹Items listed are not all-inclusive of Personal Health Support services.

**Employers may opt out of travel benefits.

Personal health support

Specialty surgeries, procedures, and treatments can be life-changing—the process to get there shouldn’t be. Premera Blue Cross takes a comprehensive approach to personal health support and care navigation. Our team personally guides members through provider selection, medical records collection, travel coordination,² and post-operative care. PDCOE and personal health support go hand in hand, and it shows with an 89% satisfaction rating from our members.¹ For members and groups to recognize savings, members must engage with the Premera Personal Health Support team.

Did you know?

Personal health support increases member satisfaction, access to primary care, and treatment completion. In addition, there are improvements in adherence to medication routines and reductions in readmission rates.³

Distinguished facilities

Quality is at the forefront of our member experience. PDCOE leverages Blue Distinction Center (BDC) and Blue Distinction Center+ (BDC+) facilities. These facilities have adopted and met nationally established quality standards for specific specialty surgeries, procedures, and treatments and must achieve a national cost differential of at least 20%. These standards consider overall patient outcomes, patient safety, and the provider’s performance history for a specialty procedure.

Specialty surgeries, procedures, and treatments offered

Top four specialties

- Bariatric surgery
- Cardiac care
- Spine surgery
- Total joint replacement

Additional specialties

- Cancer care
- Cellular immunotherapy: CAR-T
- Fertility care
- Maternity care
- Substance use treatment and recovery
- Transplants

¹ Premera Blue Cross internal member and group claims data.
² Members who live over 50 miles from a Premera Designated Centers of Excellence may receive travel benefit. Member is responsible for travel expenses in excess of IRS limits.
³ Kokorelias KM, Shiers-Hanley JE, Rios J, Knoepfli A, Hitzig SL. Factors Influencing the Implementation of Patient Navigation Programs for Adults with Complex Needs: A Scoping Review of the Literature. Health Services Insights. 2021;14. doi:10.1177/11786329211033267